

Char-Broil.

GAS2COAL 3 BURNER™

MODEL NUMBER

468300217

468300217CH

468300617



- Ⓜ Operating Instructions, 2-7
- ⓂⓂ Mode d'emploi, 8-13
- ⓂⓂⓂ Betriebsanweisungen, 14-19
- ⓂⓂ Istruzioni per l'uso, 20-25
- ⓂⓂⓂ Gebruiksaanwijzingen, 26-31
- Ⓜ Användning, 32-37
- Ⓜ Käyttöohjeet, 38-43
- Ⓜ Instrucciones de funcionamiento, 44-49
- Ⓜ Instruções para Operação, 50-55
- Ⓜ Brugsanvisning, 56-61
- Ⓜ Instruksjoner for bruk, 62-67
- Ⓜ Návod na používanie, 68-73
- Ⓜ Notkunarlæðbeiningar, 74-79
- Ⓜ Návod k obsluze, 80-85
- Ⓜ הוראות הפעלה, 86-91



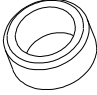

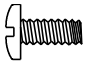
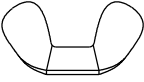
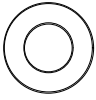
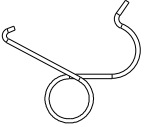
- Assembly Instructions, 95-113
- Instructions d'assemblage, 95-113
- Montageanweisungen, 95-113
- Istruzioni per il montaggio, 95-113
- Montage-instructies, 95-113
- Montering, 95-113
- Kokoamisohjeet, 95-113
- Instrucciones de armado, 95-113
- Instruções para Montagen, 95-113
- Monteringsvejledning, 95-113
- Imontering, 95-113
- Návod na montáž, 95-113
- Smalamálsskipana, 95-113
- Montážní návod, 95-113
- הוראות הרכבה, 95-113



CE

0845CR 0056

0845-16

C	1/4-20x2" Machine Screw Tornillo para metale de 1/4 -20 x 2"		4
D	7x15 Fiber Washer Arandela de fibra de 7x15		4
E	Bushing Manguito		1
F	Hitch Pin Clip Pasador de acoplamiento		1
G	#8-32x3/8" Machine Screw Tornillo No. 8-32 x 3/8"		2
H	M4 Wing Nut Tuerca de mariposa de M4		1
J	5mm Flat Washer Roldana plana de 5 mm		1
K	Venturi Clip Presillas para el tubo Venturi		1

PARTS LIST 468300217, 468300217CH, 468300617

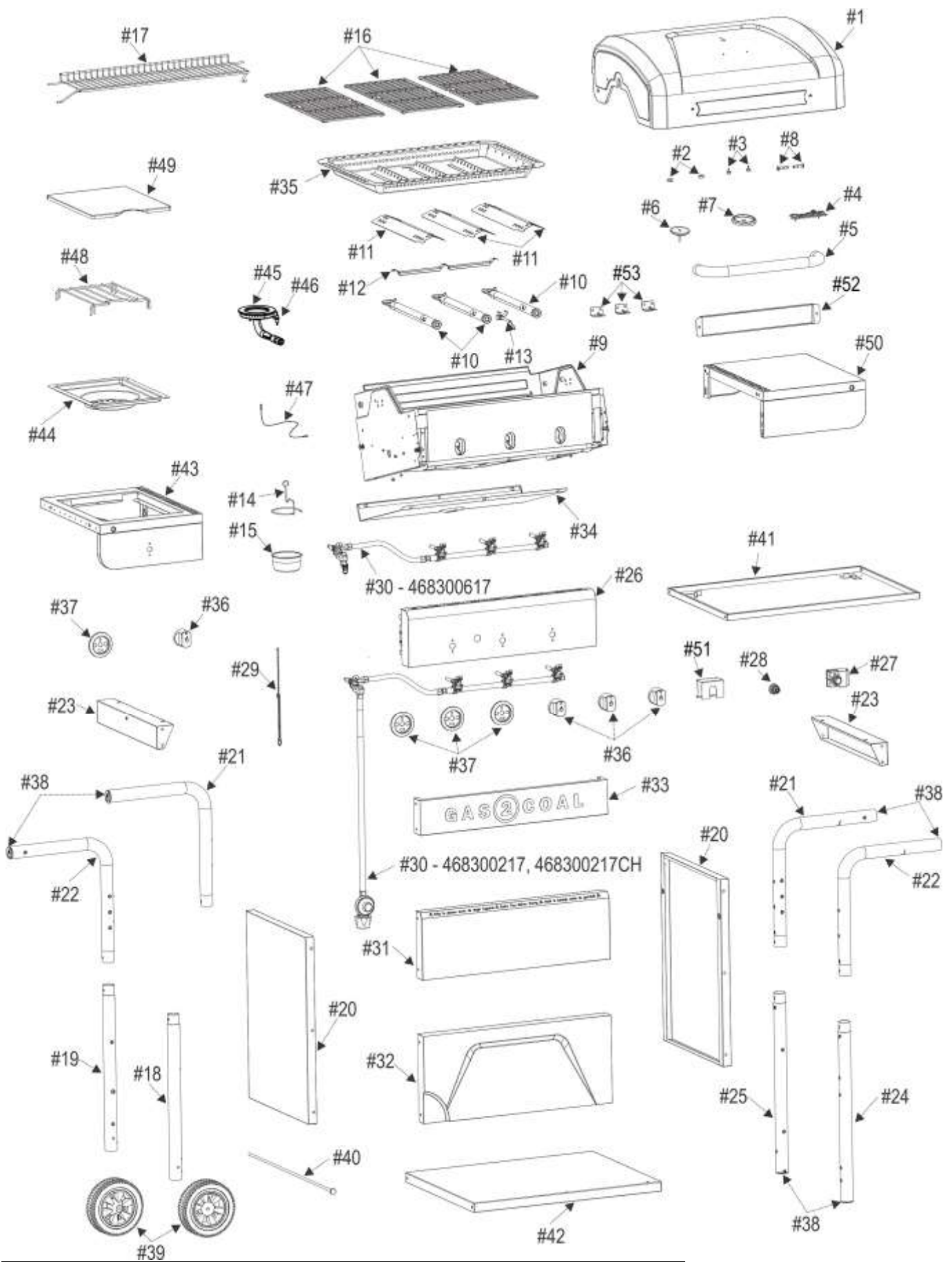
Key	Qty	Description
1	1	TOP LID
2	2	LID BUMPER, FRONT
3	2	LID BUMPER, REAR
4	1	LOGO PLATE
5	1	HANDLE
6	1	TEMPERATURE GAUGE
7	1	BEZEL, TEMPERATURE GAUGE
8	1	HARDWARE F/ TOP LID
9	1	FIREBOX
10	3	BURNER
11	3	HEAT TENT
12	2	FLAME CARRYOVER TUBE
13	1	ELECTRODE
14	1	GREASE CUP CLIP
15	1	GREASE CUP
16	3	COOKING GRATE
17	1	SWINGAWAY RACK
18	1	LEG, LEFT LOWER FRONT

19	1	LEG, LEFT LOWER REAR
20	2	SIDE PANEL, F/ CART
21	2	UPPER CART FRAME A
22	2	UPPER CART FRAME B
23	2	UPPER CART BRACE
24	1	LEG, RIGHT LOWER FRONT
25	1	LEG, RIGHT LOWER REAR
26	1	CONTROL PANEL
27	1	ELECTRONIC IGNITION MODULE
28	1	BUTTON, F/ EI MODULE
29	1	MATCH HOLDER
30	1	VALVE HOSE ASSEMBLY
31	1	FRONT PANEL, MIDDLE
32	1	FRONT PANEL, LOWER
33	1	FRONT PANEL, UPPER
34	1	HEAT SHIELD, TANK
35	1	CHARCOAL TRAY
36	4	CONTROL KNOB
37	4	BEZEL, F/ CONTROL KNOB
38	6	END CAP, F/ LEG
39	2	WHEEL
40	1	AXLE
41	1	STORAGE TRAY
42	1	BOTTOM SHELF
43	1	HOT PLATE SHELF
44	1	DRIP PAN, F/ HOT PLATE
45	1	HOT PLATE
46	1	ELECTRODE, F/ HOT PLATE
47	1	IGNITOR WIRE, F/ HOT PLATE
48	1	HOT PLATE GRATE
49	1	HOT PLATE LID
50	1	RIGHT SHELF ASSEMBLY
51	1	HEAT SHIELD, F/ EI MODULE
52	1	HEAT SHIELD, F/ HANDLE
53	3	BURNER BRACE

NOT Pictured

...	1	HARDWARE PACK
...	1	PRODUCT GUIDE, EUROPE
...	1	RETAINER CLIP, F/ HOT PLATE

PARTS DIAGRAM 468300217, 468300217CH, 468300617



ASSEMBLY