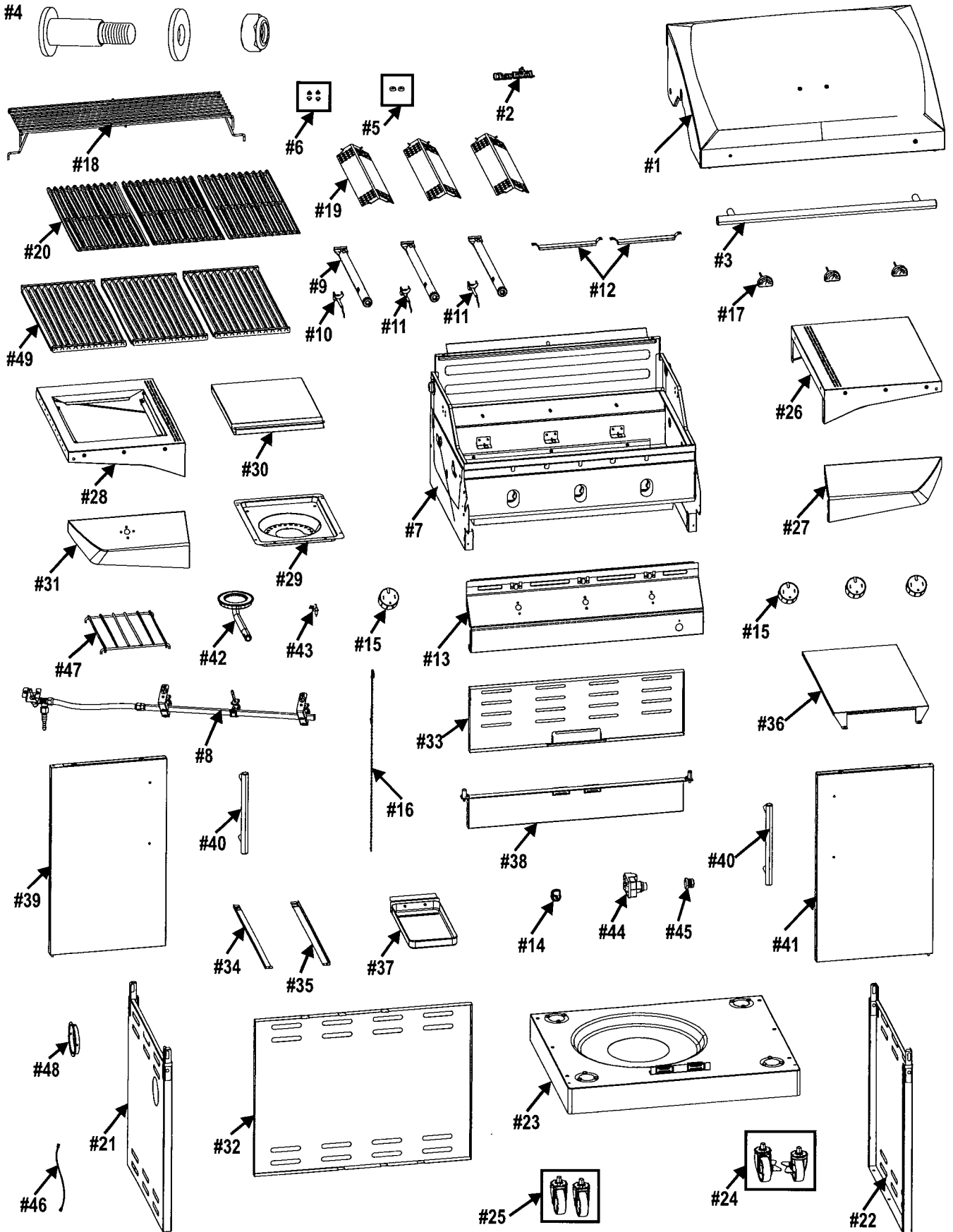


PARTS DIAGRAM

For Models 468200315, 468200415, 468500315, 468202415



T-36G - 50 mb

Key	Qty	Description	Part #	Kriswell Art.No.:
1	1	TOP LID	G519-X500-W1	150 150
2	1	LOGO PLATE	G211-0047-W1	150 280
3	1	HANDLE, TOP LID	G519-00B1-W3	150 152
4	1	HARDWARE F/ TOP LID ASSEMBLY	G515-0035-W1	150 215
5	2	RUBBER BUMPER, W/ HOLE, F/ TOP LID	G527-0002-W3	150 279
6	4	RUBBER BUMPER, ROUND	G501-0066-W1	150 104
7	1	FIREBOX	G519-X700-W1	150 156
8	1	VALVE ASSEMBLY	G519-X800-W1	180 127
9	3	MAIN BURNER	G519-E700-W1	150 147 (140 527)
10	1	ELECTRODE SET, F/ MAIN BURNER, 900MM WIRE	G515-0014-W1	150 159
11	2	ELECTRODE SET, F/ MAIN BURNER, 600MM WIRE	G515-0067-W1	150 160
12	2	CARRYOVER TUBE	G515-0044-W1	150 110
13	1	MAIN CONTROL PANEL	G519-00J7-W1	150 219
14	1	IGNITER SWITCH MODULE	G515-0017-W1A	150 126
15	4	CONTROL KNOB	G351-2600-W1	150 120
16	1	MATCH HOLDER	G501-0068-W1	150 165
17	3	THERMOMETER	G351-0081-W1	150 285
18	1	WARMING RACK	G515-00B8-W1	150 167
19	3	HEAT TENT	G614-0045-W1	150 111
20	3	COOKING GRATE	G526-0007-W1	150 106 (140 524)
21	1	LEFT CART PANEL	G515-1100-W1	150 170
22	1	RIGHT CART PANEL	G515-1200-W1	150 171
23	1	BOTTOM SHELF	G519-G600-W1	150 172
24	2	CASTER, LOCKING	G515-0082-W1	150 132
25	2	CASTER, FIXED	G350-0024-W1	150 133
26	1	RIGHT SIDE SHELF	G519-00F7-W3	150 204
27	1	CONTROL PANEL, RIGHT SIDE SHELF	G519-0011-W1	150 176
28	1	SIDEBURNER SHELF	G519-P800-W1	150 177
29	1	DRIP PAN INSERT	G515-0083-W2	150 178
30	1	LID, F/ SIDEBURNER	G515-0047-W1	150 179
31	1	CONTROL PANEL,SB SHELF	G519-00C9-W1	150 180
32	1	LOWER REAR CART PANEL	G515-0038-W1	150 181
33	1	UPPER REAR CART PANEL	G515-0023-W1	150 182
34	1	LEFT RAIL, F/ GREASE TRAY	G515-0024-W1	150 134
35	1	RIGHT RAIL, F/ GREASE TRAY	G515-0025-W1	150 135
36	1	HEAT SHIELD, F/ TANK	G515-0026-W1	150 185
37	1	GREASE TRAY	G350-4400-W1A	150 136
38	1	UPPER DOOR BRACE	G519-L400-W1	150 187
39	1	DOOR, LEFT, NO HANDLE	G519-G800-W1	150 188
40	2	HANDLE F/ DOOR	G351-0032-W1	150 128
41	1	DOOR, RIGHT, NO HANDLE	G519-X900-W1	150 190
42	1	SIDEBURNER	G519-F100-W1	150 238
43	1	ELECTRODE, F/ SIDEBURNER	G515-0039-W1	150 192
44	1	ELECTRONIC IGNITION MODULE	G511-0055-W1	150 193
45	1	CAP, F/ ELECTRONIC IGNITION MODULE	G515-0030-W1	150 125
46	1	IGNITOR WIRE, F/ SIDEBURNER	G607-0049-W1	150 195
47	1	GRATE, F/ SIDEBURNER	G519-00A5-W1	150 196
48	1	GROMMET	G501-0039-W1	150 197
49	3	COOKING GRATE, INFRARED EMITTER	G526-2200-W1	150 137 (140 522)
50	1	REGULATOR, (COUNTRY SPECIFIC, IF SUPPLIED)		
...	1	CASTER PIN	G350-0026-W1	150 143
...	2	DOOR MAGNET	G527-0037-W1	150 142
...	1	HARDWARE PACK	G519-B050-W1	150 227
...	1	ASSEMBLY/ OPERATIONS MANUAL, EUROPEAN	G519-500801-W1	150 199
...	1	IR CLEANING TOOL	G526-0013-W1	150 141

T-36G Black - 50 mb

Key	Qty	Description	Part #	Kriswell Art.No.:
1	1	TOP LID	G519-S900-W1	150 213
2	1	LOGO PLATE	G211-0047-W1	150 280
3	1	HANDLE, TOP LID	G519-00B1-W3	150 152
4	1	HARDWARE F/ TOP LID ASSEMBLY	G351-0085-W1	150 215
5	2	RUBBER BUMPER, W/ HOLE, F/ TOP LID	G527-0002-W3	150 279
6	4	RUBBER BUMPER, ROUND	G560-5001-W1	150 104
7	1	FIREBOX	G519-T200-W1	150 217
8	1	VALVE ASSEMBLY	G519-X800-W1	180 127
9	3	MAIN BURNER	G519-E700-W1	150 147 (140 527)
10	1	ELECTRODE SET, F/ MAIN BURNER, 900MM WIRE	G515-0014-W1	150 159
11	2	ELECTRODE SET, F/ MAIN BURNER, 600MM WIRE	G515-0067-W1	150 160
12	2	CARRYOVER TUBE	G515-0044-W1	150 110
13	1	MAIN CONTROL PANEL	G519-00J7-W1	150 219
14	1	IGNITER SWITCH MODULE	G515-0017-W1A	150 126
15	4	CONTROL KNOB	G351-2600-W1	150 120
16	1	MATCH HOLDER	G501-0068-W1	150 165
17	3	THERMOMETER	G351-0081-W1	150 285
18	1	WARMING RACK	G515-00B8-W1	150 167
19	3	HEAT TENT	G614-0045-W1	150 111
20	3	COOKING GRATE	G526-0007-W1	150 106 (140 524)
21	1	LEFT CART PANEL	G515-0300-W1	150 220
22	1	RIGHT CART PANEL	G515-0400-W1	150 221
23	1	BOTTOM SHELF	G519-R100-W1	150 222
24	2	CASTER, LOCKING	G515-0082-W1	150 132
25	2	CASTER, FIXED	G350-0024-W1	150 133
26	1	RIGHT SIDE SHELF	G519-00F7-W3	150 204
27	1	CONTROL PANEL, RIGHT SIDE SHELF	G519-0011-W1	150 176
28	1	SIDEBURNER SHELF	G526-0800-W1	150 286
29	1	DRIP PAN INSERT	G515-0083-W2	150 178
30	1	LID, F/ SIDEBURNER	G507-0011-W1	150 206
31	1	CONTROL PANEL,SB SHELF	G519-00C9-W1	150 180
32	1	LOWER REAR CART PANEL	G515-0038-W1	150 181
33	1	UPPER REAR CART PANEL	G515-0023-W1	150 182
34	1	LEFT RAIL, F/ GREASE TRAY	G515-0024-W1	150 134
35	1	RIGHT RAIL, F/ GREASE TRAY	G515-0025-W1	150 135
36	1	HEAT SHIELD, F/ TANK	G515-0026-W1	150 185
37	1	GREASE TRAY	G350-4400-W1A	150 136
38	1	UPPER DOOR BRACE	G519-J200-W1	150 223
39	1	DOOR, LEFT, NO HANDLE	G519-T900-W1	150 224
40	2	HANDLE F/ DOOR	G351-0032-W1	150 128
41	1	DOOR, RIGHT, NO HANDLE	G519-U100-W1	150 225
42	1	SIDEBURNER	G519-F100-W1	150 238
43	1	ELECTRODE, F/ SIDEBURNER	G515-0039-W1	150 192
44	1	ELECTRONIC IGNITION MODULE	G511-0055-W1	150 193
45	1	CAP, F/ ELECTRONIC IGNITION MODULE	G515-0030-W1	150 125
46	1	IGNITOR WIRE, F/ SIDEBURNER	G607-0049-W1	150 195
47	1	GRATE, F/ SIDEBURNER	G519-00A5-W1	150 196
48	1	GROMMET	G501-0039-W1	150 197
49	3	COOKING GRATE, INFRARED EMITTER	G526-2200-W1	150 137 (140 522)
50	1	REGULATOR, (COUNTRY SPECIFIC, IF SUPPLIED)		
51	2	RUBBER BUMPER F/ SIDEBURNER	G501-0066-W1	150 104
...	1	CASTER PIN	G350-0026-W1	150 143
...	2	DOOR MAGNET	G527-0037-W1	150 142
...	1	HARDWARE PACK	G519-B050-W1	150 227
...	1	ASSEMBLY/ OPERATIONS MANUAL, EUROPEAN	G519-500801-W1	150 199
...	1	IR CLEANING TOOL	G526-0013-W1	150 141