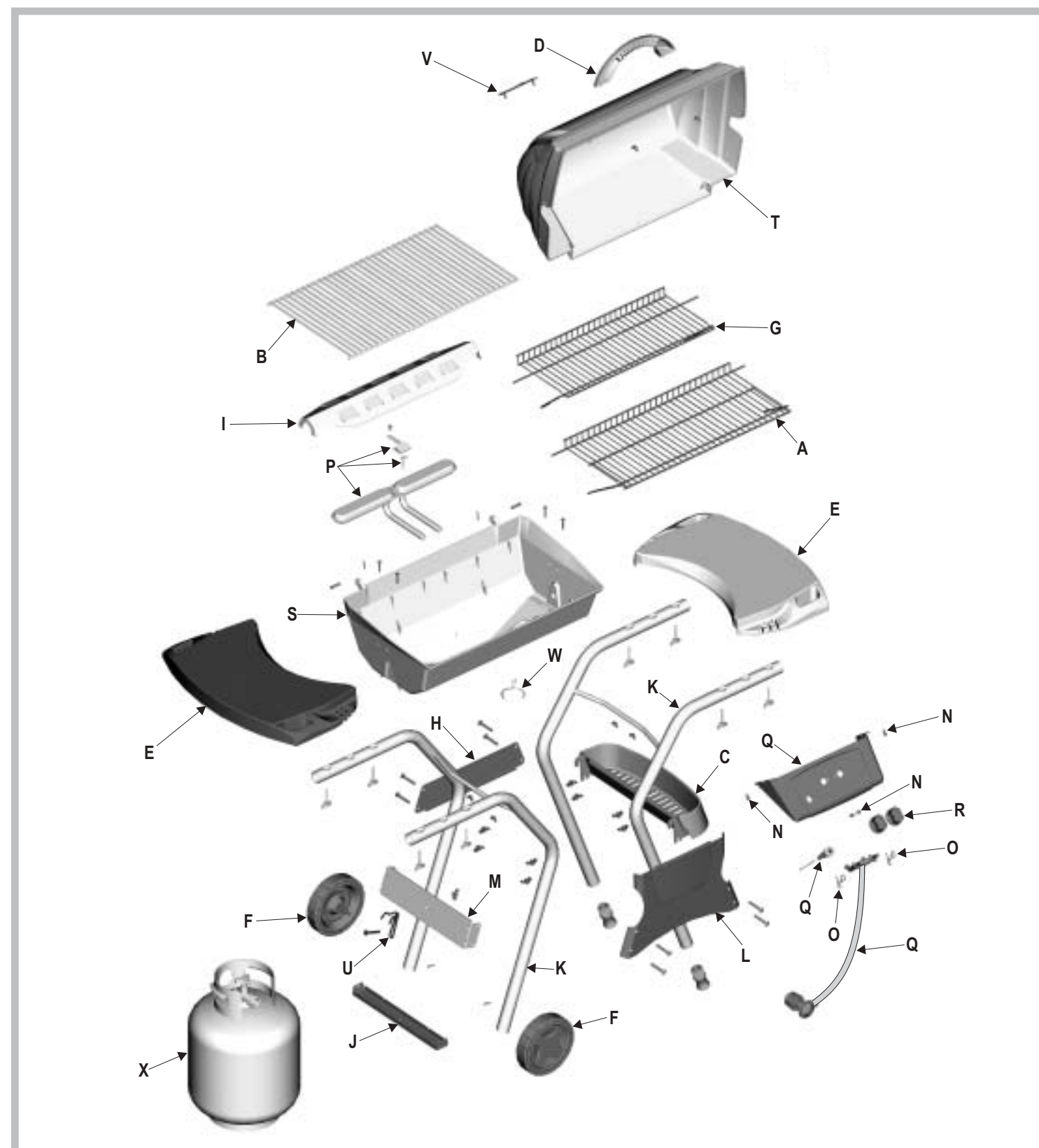


Parts List - Model 463811903

Key	Qty.	Description	Part #	Key	Qty.	Description	Part#
A	1	Lower SwingAway	4152125	W	1	Grease Clip	5156607
B	1	Cooking Grate	4152741	X	1	LP Gas Tank	4158015
C	1	Condiment Basket	4154269		1	Hardware Bag, Cart	4254047
D	1	Handle	4154488		2	Hardware Bag, Shelves	4254050
E	2	Side Shelf	4154543			Replacement Ignition Module Bag	4506709
F	2	Wheel Assembly	4310002				
G	1	Upper SwingAway	4156449				
H	1	Back Support Brace	4500250				
I	1	V Bar	4500291				
J	1	Tank Support Bracket	4502093				
K	2	Leg Assembly	4502097				
L	1	Front Panel	4502232				
M	1	Side Support Brace	4502373				
N	4	#10x1/2", T-20, Self-Tap Screw	4080043				
O	2	Valve Clip	4156172				
P	1	Burner/Collector Assembly	4505085				
Q	1	Control Panel Assembly	4530116				
R	2	Control Knob	4154470				
S	1	Grill Bottom	4580468				
T	1	Grill Lid	4581964				
U	1	Tank Retainer Wire	4151018				
V	1	Logo Plate	4157147				

Optional Assembly Hardware
We realize some customers prefer to use tools. **Optional hex nuts** have been provided for you to use.



**NOTHING
SHOULD COME BETWEEN
A MAN
AND HIS FLAME.**



463811903 / 0-4165207 (11-25-02)

QUICKSET®

463811903
ASSEMBLY MANUAL



**THIS GRILL IS FOR
OUTDOOR USE ONLY**

CAUTION: Read and follow all safety statements, assembly instructions, and use and care directions before attempting to assemble and cook.

INSTALLER/ASSEMBLER: Leave these instructions with consumer.

CONSUMER: Keep this manual for future reference.

▲ WARNING

Failure to follow all manufacturer's instructions could result in serious personal injury and/or property damage.

▲ CAUTION

Some parts may contain sharp edges – especially as noted in the manual! Wear protective gloves if necessary.

If you have any questions or need assistance during assembly, please call **1-800-241-7548**.

Visit us on the web at:
www.charbroil.com

Char-Broil®
KEEPERS OF THE FLAME
COLUMBUS, GA

1 **Parts to assemble:**
 2 Leg Assembly
 1 Front Panel
 1 Side Support Brace
 4 Carriage Bolt, 2"
 4 Plastic Tee Knob

A. Lay leg assemblies on their sides.
 B. Place front panel on legs.
 C. Braces attach to inside of legs.
 D. Secure with carriage bolts and tee knobs.
NOTE: Leave tee knobs loose on right side.

Qty. 4
 Qty. 4

NOTE: To prevent scratching, lay grill on packing material to assemble.

2 **Parts to assemble:**
 1 Back Support Brace
 4 Carriage Bolt, 2"
 4 Plastic Tee Knob
 2 Wheel Assembly
 1 Tank Support Bracket
 2 Hitch Pin
 2 Leg Extender

A. Turn assembly upside-down.
 B. Secure back brace and side brace to left leg and back brace to right leg with carriage bolts and tee knobs. **NOTE:** Leave tee knobs loose on right side.
 C. Insert wheel assemblies into legs and bracket. Bracket fits inside legs.
 D. Secure with hitch pin in axle bolt hole closest to leg.
 E. Push leg extenders into right legs.

Qty. 4
 Qty. 2

3 **Parts to assemble:**
 1 Condiment Basket

A. Stand cart upright.
 B. Place condiment basket hooks over front panel bolts on inside of front leg. See inset **A**.
 C. Place condiment basket hooks over back support brace bolts on outside of brace. See inset **B**.
 D. Fully tighten tee knobs on both legs.

4 **Parts to assemble:**
 1 Grill Bottom Assembly
 4 Carriage Bolt, 1/2"
 4 Metal Wing Nut

A. Stand cart upright.
 B. Make sure ignitor wire is connected to ignitor.
 C. Place grill bottom onto supports. Control panel overlaps front panel.
 D. Secure with carriage bolts and wing nuts.

Qty. 4
 Qty. 4

5 **Parts to assemble:**
 1 V Bar

A. Place V bar onto supports at each end of grill bottom.

NOTE:
 Ceramic briquets are not required.

6 **Parts to assemble:**
 2 Side Shelf
 8 Wing Screw

A. Place shelves onto legs.
 B. Secure with four wing screws per shelf.

Qty. 8

7 **Parts to assemble:**
 1 Grill Lid
 1 Handle
 1 Logo Plate
 2 Metal Wing Nut
 2 Hinge Pin
 2 Hitch Pin

A. Attach lid to grill bottom with hinge and hitch pins.
 B. Attach handle to lid with two metal wing nuts.
 C. Snap logo plate into lid.

Qty. 2
 Qty. 2
 Qty. 2

8 **Parts to assemble:**
 1 Lower SwingAway
 1 Upper SwingAway

A. Slide rear pivot wire of lower SwingAway into lower holes in side of grill lid.
 B. Insert leg wires into top hole of three-hole pattern in side of grill bottom.
 C. Slide rear pivot wire of upper SwingAway into middle holes in side of grill lid.
 D. Insert leg wires into loop on sides of lower warming rack.

Note: Wires at rear of SwingAways should point upward.

9 **Parts to assemble:**
 1 Cooking Grate

A. Place cooking grate onto grate rests in grill bottom.

NOTE: For illustration purposes, SwingAways are not shown.

10 **Parts to assemble:**
 1 Tank Retainer Wire
 1 Carriage Bolt, 1/2"
 1 Plastic Tee Knob

A. Attach retainer wire to side brace with carriage bolt and tee knob. Leave loose.

Qty. 1
 Qty. 1

11 **Parts to assemble:**
 1 LP Gas Tank

LP tank is shipped empty. Fill and leak check before attaching to grill and regulator.

A. Center LP tank on support bracket with collar opening to front.
 B. Slide retainer over tank collar and tighten tee knob.

CAUTION
 Tank collar opening must face to front of cart once tank is attached.
 Failure to install tank correctly may allow gas hose to be damaged in operation, resulting in the risk of fire.

See Use & Care manual to perform the "Burner Flame Check" and for important safety instructions before using.

12 **Parts to assemble:**
 1 Grease Clip

A. Hang grease clip beneath grill bottom.
 B. Hang an empty soup can (not included) from grease clip.

CAUTION
 Failure to install can in clip will cause hot grease to drip from bottom of grill with risk of fire or property damage.