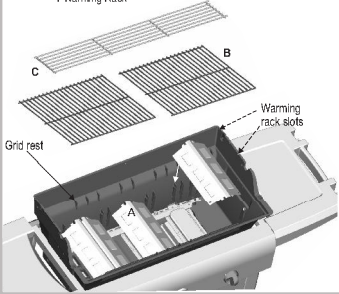


13

Items to Assemble:
3 Vaporizer Tents
2 Cooking Grids
1 Warming Rack

ANote correct position of vaporizer tents directly over burners.
BPlace cooking grids as shown.
CPlace warming rack in slots on bottom casting.

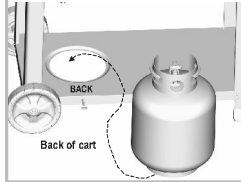


14

Items to Assemble:
1 (purchased) LP Tank

LP tank is sold separately. Use only with an (over-fill protection device) OPD equipped LP tank. Fill and leak check before attaching to grill and regulator.

Place LP tank into hole in bottom shelf. Tighten thumbscrew to hold LP tank securely in place.



CAUTION

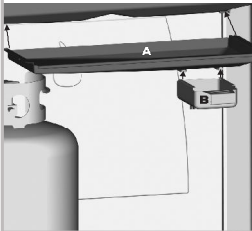
- Tank collar opening must face to front of cart once tank is attached.
- Failure to install tank correctly may allow gas hose to be damaged in operation, resulting in the risk of fire.

See the Use & Care manual to correctly install the LP Tank, Leak Test and do the Burner Flame Check.

15

Items to Assemble:
1 Grease Tray Assembly
1 Grease Pan

- A** Slide grease tray into brackets on bottom casting.
- B** Slide grease pan into brackets on grease tray.



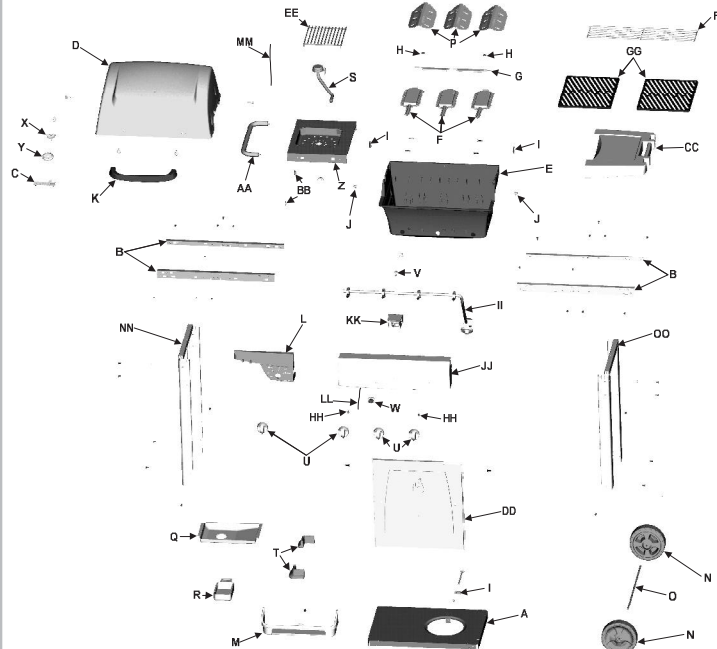
CAUTION

Failure to install the grease tray will cause hot grease to drip from bottom of grill with risk of fire or property damage.

You may have hardware left over after completing assembly of your grill. This is normal as in some cases we have included extra hardware to ensure you have enough.

Parts List - Model 463352205

Key	Qty.	Description	Part #	Key	Qty.	Description	Part #
A	1	Bottom Shelf	7000478	AA	1	Sideburner Handle	7000059
B	4	Rails	7000480	BB	2	Washer Head Hex Nuts	7000271
C	1	Logo Plate	4157147	CC	1	Shelf	7000349
D	1	Top Casting	7000483	DD	1	Front Panel	7000440
E	1	Bottom Casting	7000581	EE	1	Sideburner Grate	4156376
F	3	Burners	7000083	FF	1	Warming Rack	7000180
G	1	Carryover Tube	7000278	GG	2	Cook Grids, 12x15	7000028
H	2	Pal Nuts	7000132	HH	2	10x3/8 Self-Tap Screw	7000449
I	3	"U" Nuts	7000185	II	1	Valve/Hose/Regulator	7000377
J	2	Casting Bumpers	7000184	JJ	1	Control Panel	7000585
K	1	Handle	7000199	KK	1	Ignition Module	7000160
L	1	Fascia, Left	7000266	LL	1	11" Ignitor Wire	7000893
M	1	Condiment Basket	7000371	MM	1	24" Ignitor Wire	7000894
N	2	Wheels	7000262	NN	1	Leg Assembly, Long	7000445
O	1	Axle Rod	7000265	OO	1	Leg Assembly, Short	7000446
P	3	Vaporizer Tents	7000082	--	1	Hardware Bag	7000743
Q	1	Grease Tray Assy	7000042				
R	1	Grease Pan	7000046				
S	1	Sideburner Burner	7000036				
T	2	Leg Extenders	7000230				
U	4	Control Knobs	7000237				
V	1	Electrode	7000378				
W	1	Ignition Button w/Battery	7000162				
X	1	Temperature Gauge w/Wing Nut	4157171				
Y	1	Temperature Gauge Bezel	4157169				
Z	1	Sideburner Body	7000488				



Char-Broil
KEEPERS OF THE FLAME

PERFORMANCE SERIES™

ASSEMBLY MANUAL
Model 463352205

THIS GRILL IS FOR YOUR USE ONLY

CAUTION: Read and follow all safety statements, assembly instructions and use and care instructions before attempting to assemble and cook.

PLEASE ASSEMBLE AND USE THIS GRILL ONLY AS A CONSUMER.

CONSUMER: Keep this manual for future reference.

WARNING: Failure to follow manufacturer's instructions could result in serious personal injury and/or property damage.

CAUTION: Some parts may contain sharp edges - especially as noted in the manual. Wear protective gloves if necessary. If you have any questions or need assistance during assembly, please call 1-800-241-7548.

Visit us online at www.charbroil.com

PRECISION GRILLING TECHNOLOGY